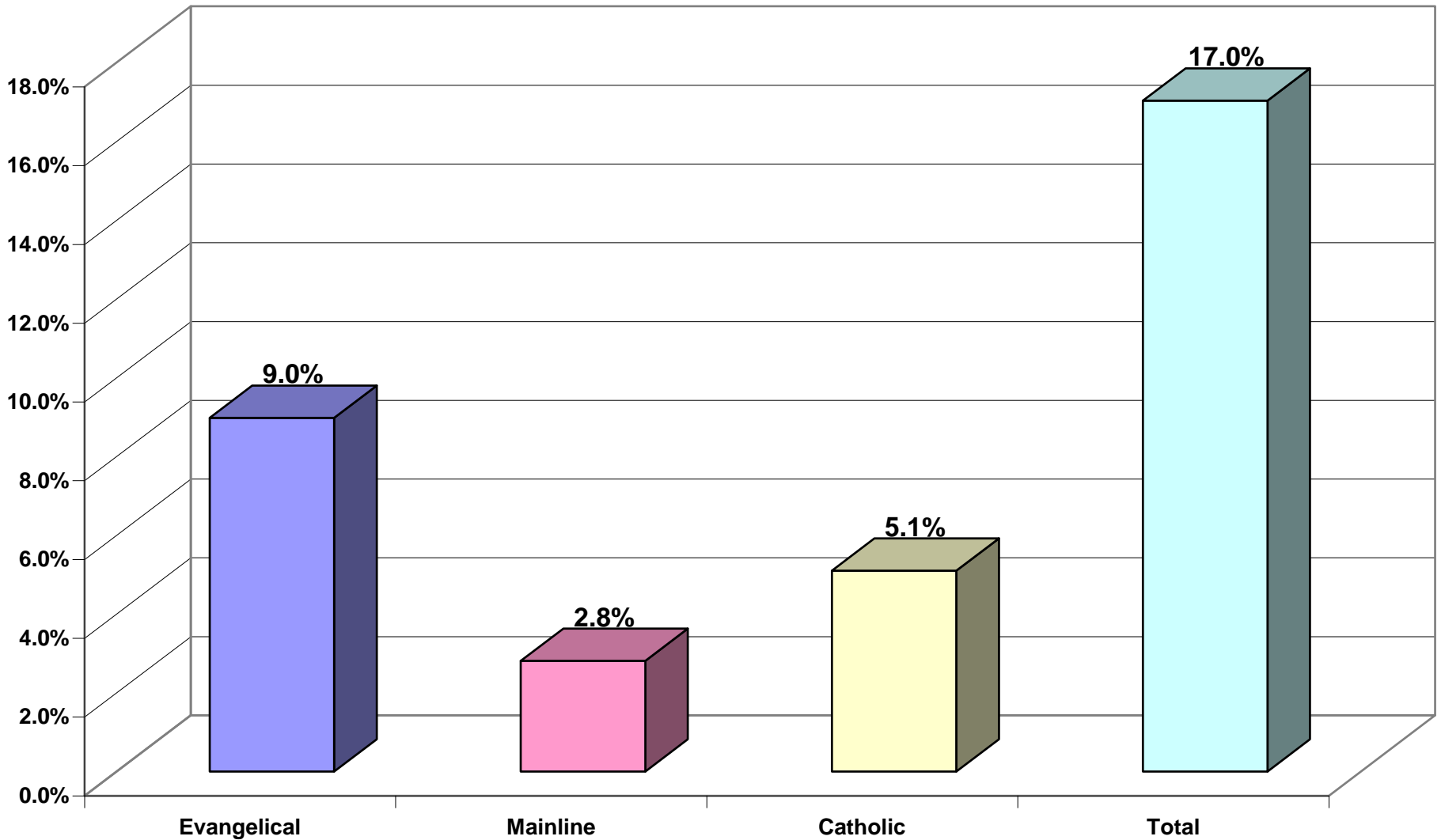




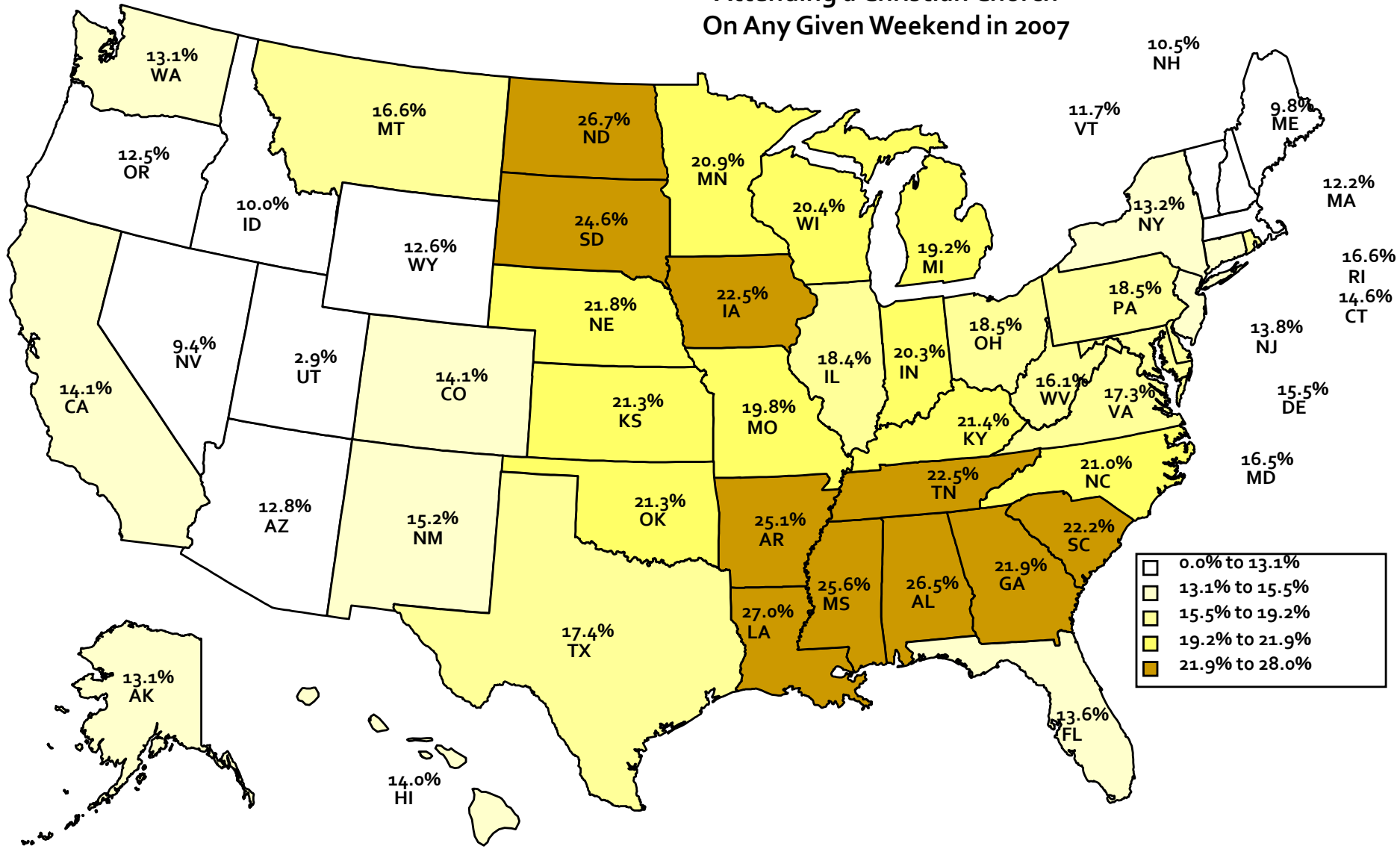
**“The percentage of people that attend a Christian Church on any given week-end is far below what pollsters report.” (David T. Olson, *The American Church in Crisis*)**

**“Numbers from actual counts of people in orthodox Christians churches show that 17% of the population attended a Christian church on any given weekend in 2007.”** *The American Church in Crisis*

**Percentage of the Population Attending Church  
on any Given Weekend in 2007**



# Percentage of the Population Attending a Christian Church On Any Given Weekend in 2007



# *State of Michigan*

**Total Population: 9,969,727**

**Churched (19.2%): 1,914,188**

**Unchurched (80.8): 8,055,529**

# Oakland County

**Total Population: 1,204,042**

**Churched (19.2%): 231,176**

**Unchurched (80.8%): 972,866**

# Wayne County

**Total Population: 1,980,262**

**Churched (19.2%): 380,210**

**Unchurched (80.8%): 1,600,052**

# Macomb County

**Total Population: 829,439**

**Churched (19.2%): 159,252**

**Unchurched (80.8%): 670,187**

# Wayne, Oakland and Macomb Counties

Total Population: 4,013,743

Churched (19.2%): 770,639

Unchurched (80.8%): 3,243,104

# St. Clair County

**Total Population: 169,840**

**Churched (19.2%): 32,609**

**Unchurched (80.8%): 137,231**

# Macomb and St. Clair Counties

**Total Population: 999,276**

**Churched (19.2%): 191,861**

**Unchurched (80.8%): 807,415**

# *~Potential~*

**It takes a population of 4,000 to support the planting of a new church.**

*~Potential~*

**What is the potential for  
church plants in the  
Michigan District?**

# *~Potential~*

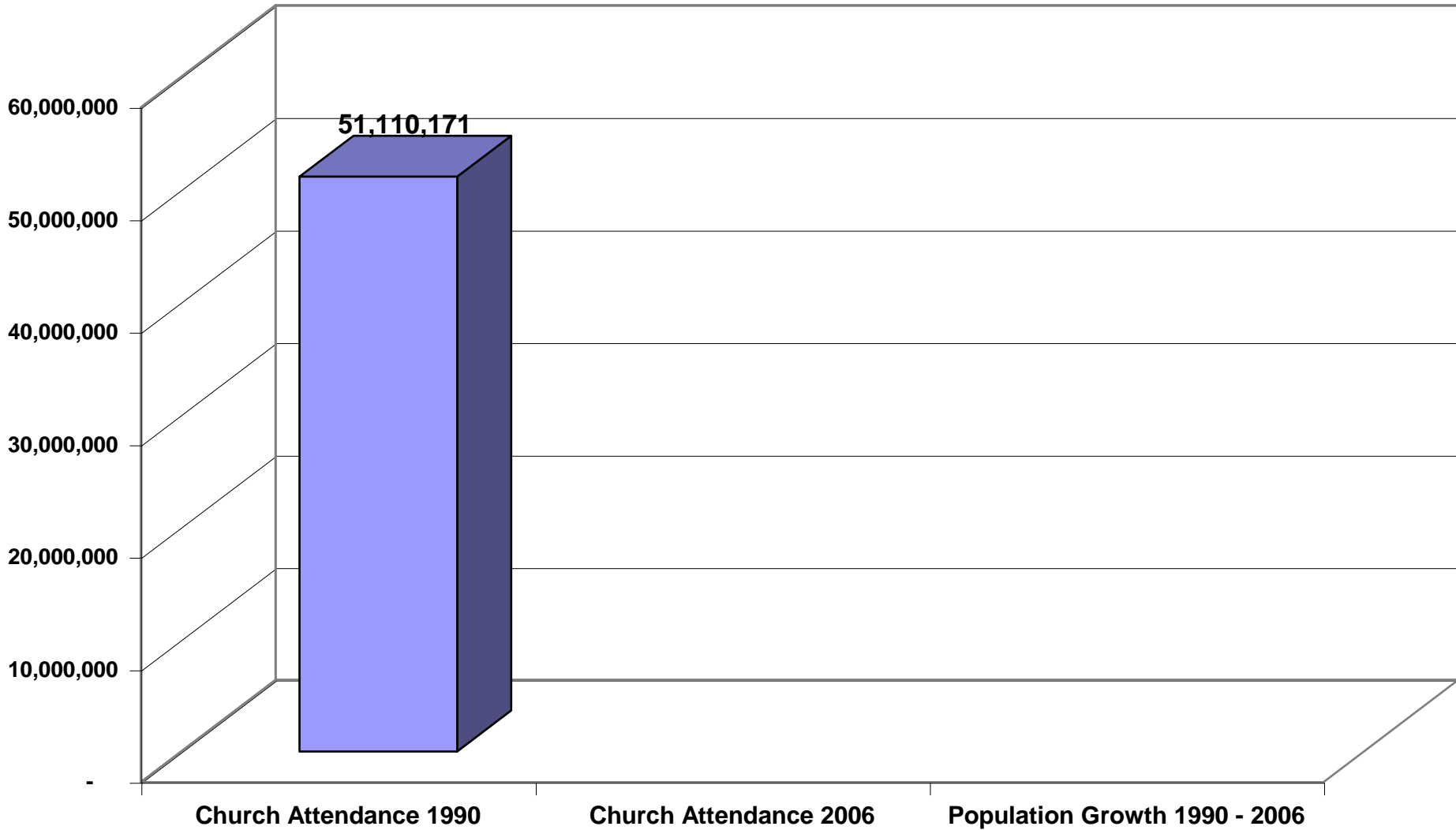
It takes a population of 4,000 to support the planting of a new church.

Mich. Unchurched population = 8,055,529

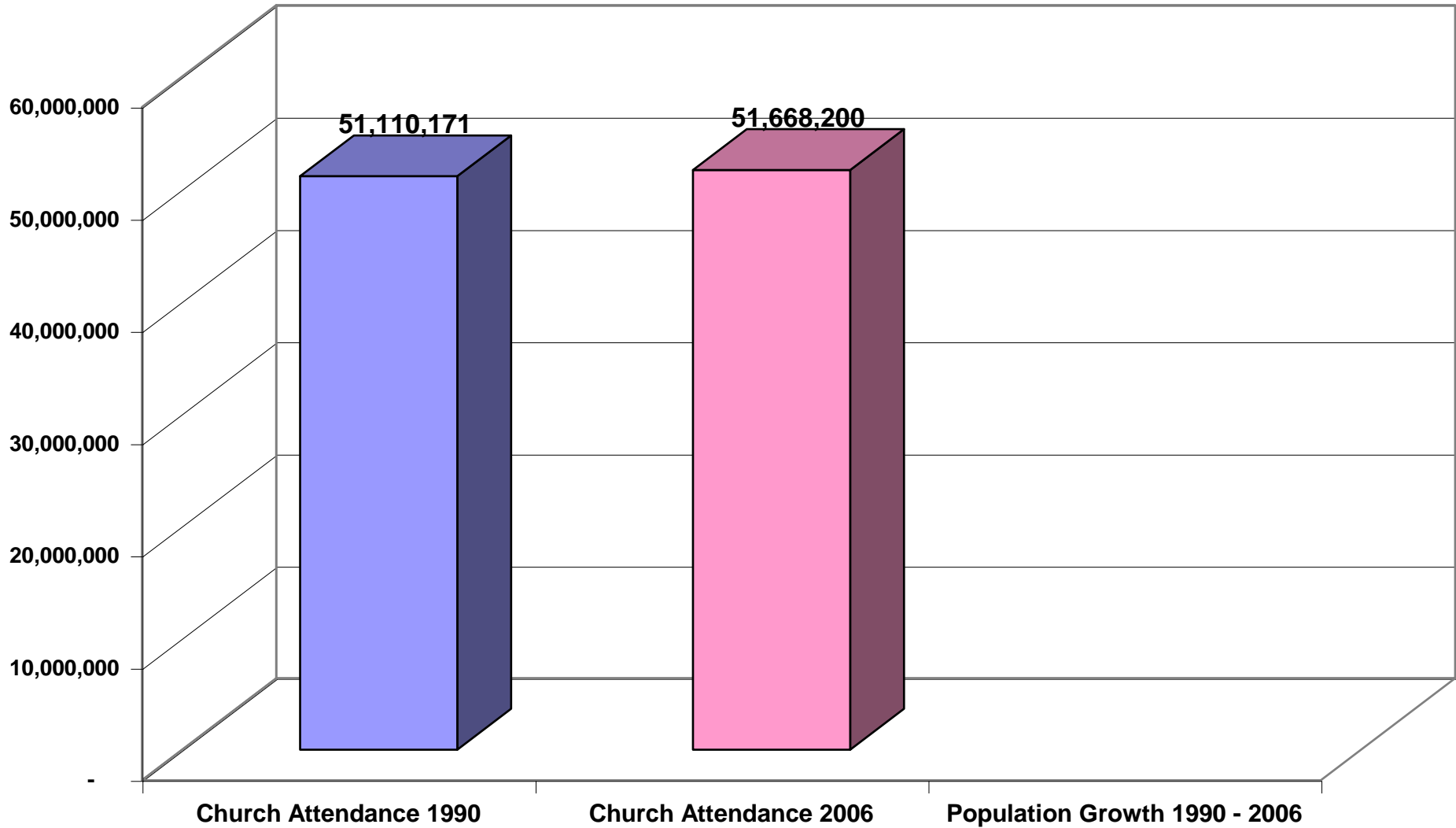
Divided by 4,000 = 2014 church plants

**Weekend attendance at Christian churches has stayed virtually the same for the 16 years from 1990-2006.**

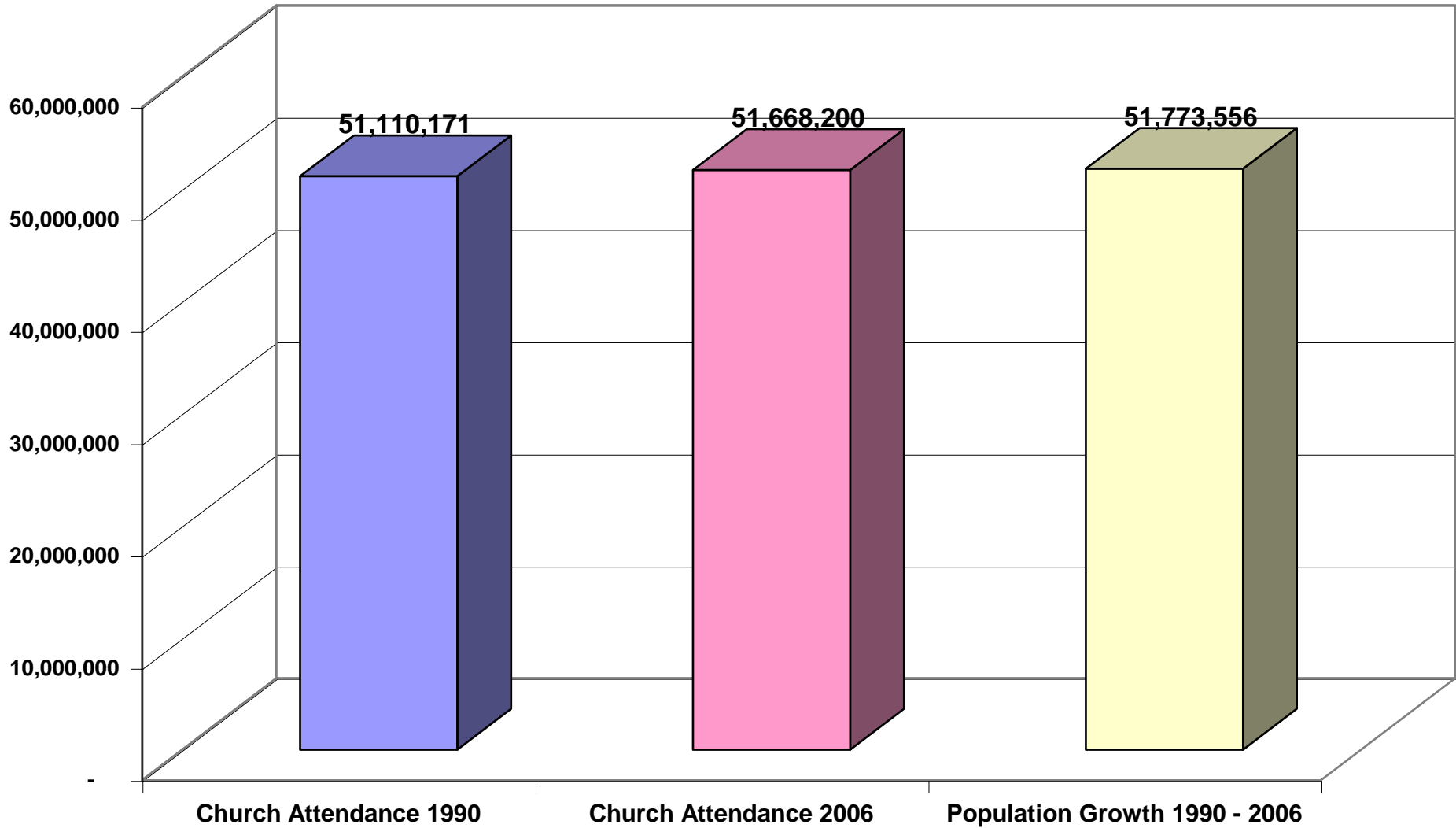
# Church Attendance in 1990 & 2006 Compared to Population Growth 1990 - 2006



# Church Attendance in 1990 & 2006 Compared to Population Growth 1990 - 2006



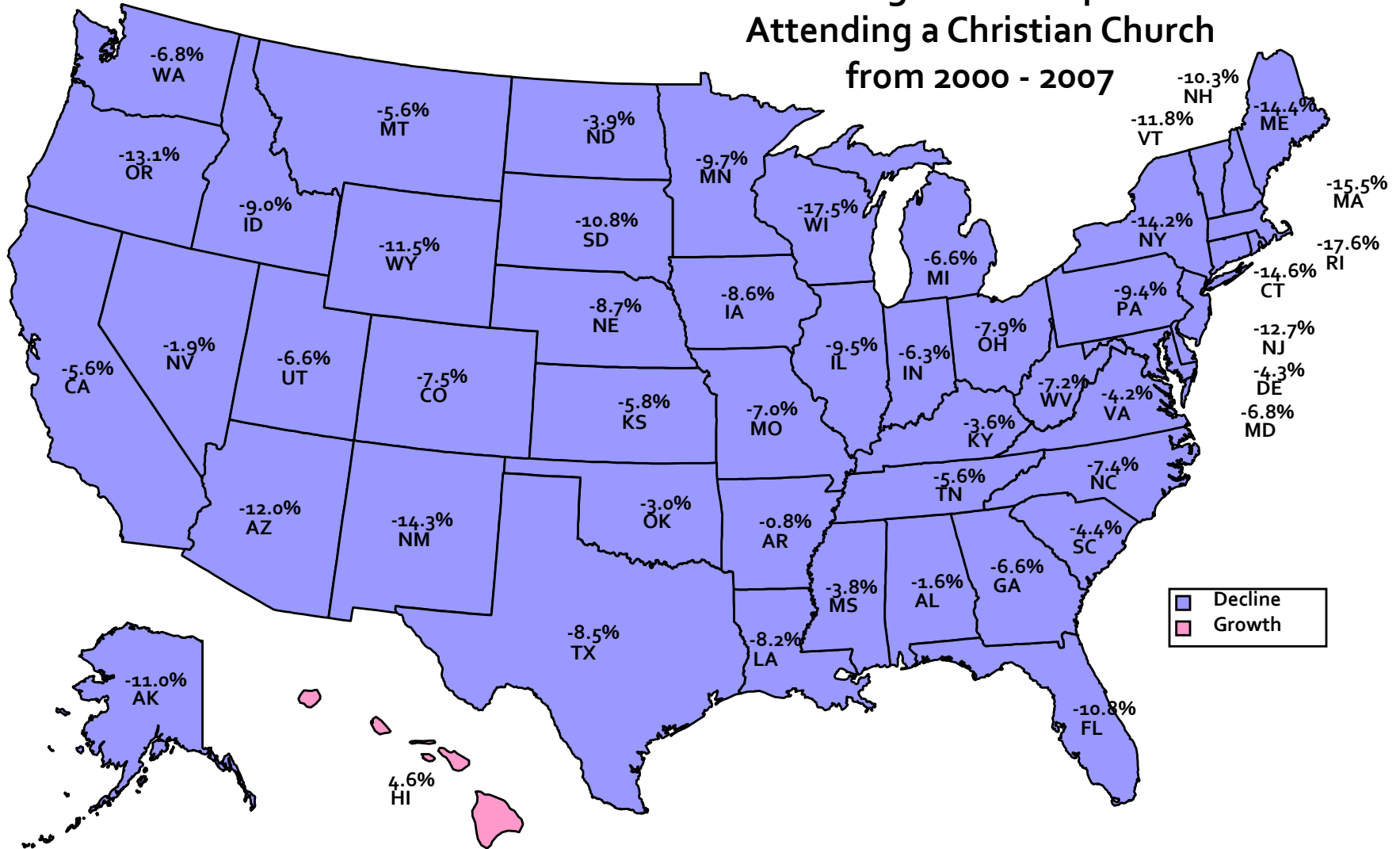
# Church Attendance in 1990 & 2006 Compared to Population Growth 1990 - 2006



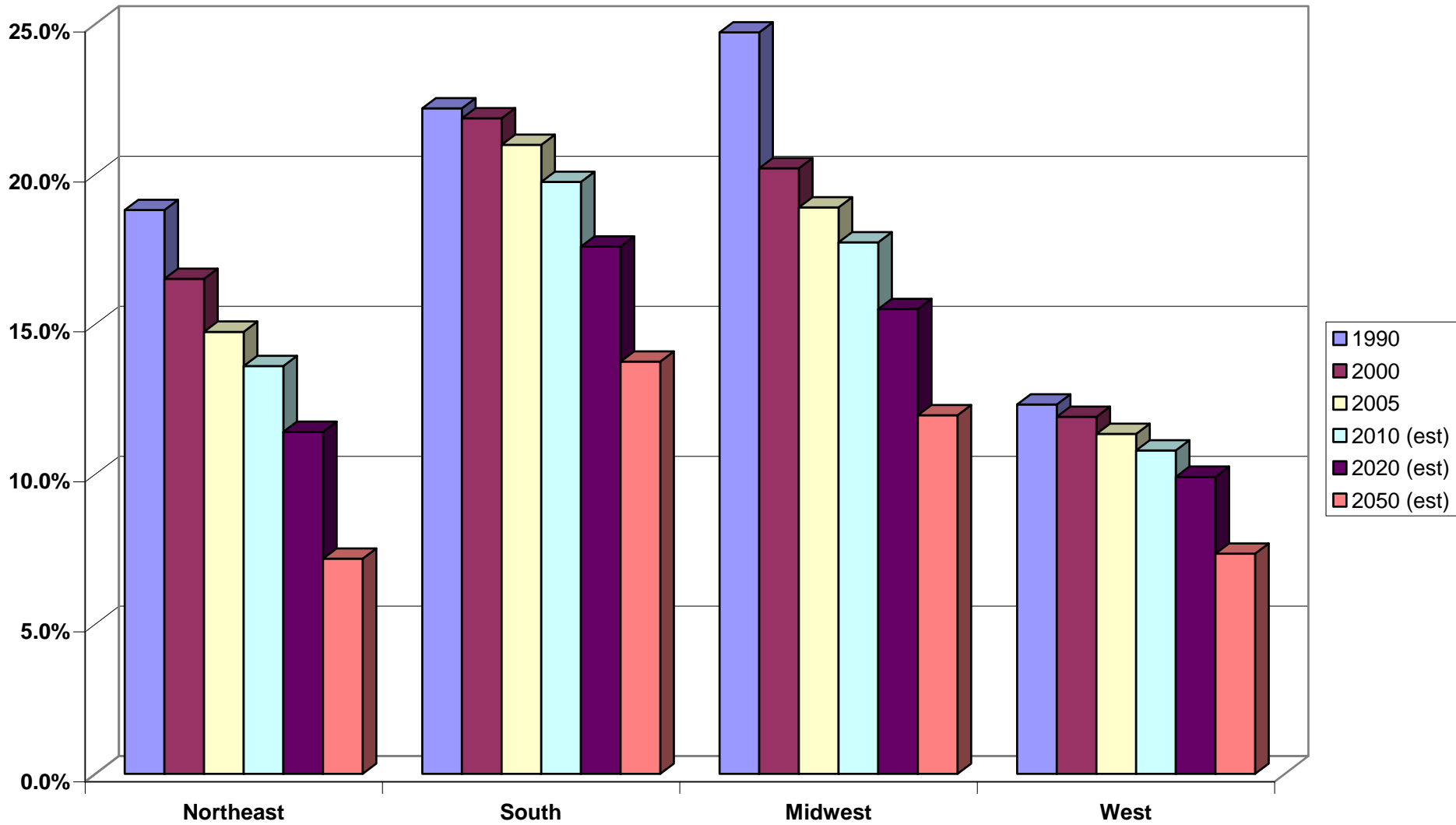
**While the same number of Christians sat in their church pews each year for the last 16 years, the number of people living in the United States grew by the identical number!**

**The percentage of people  
attending a Christian church  
each week-end decreased  
significantly from 1990-2007**

# Growth or Decline in the Percentage of the Population Attending a Christian Church from 2000 - 2007



# Percentage of the Population Attending a Christian Church on any Given Weekend by Region 1990 - 2050



# Michigan District

*Average Worship Attendance*

1999 = 6351

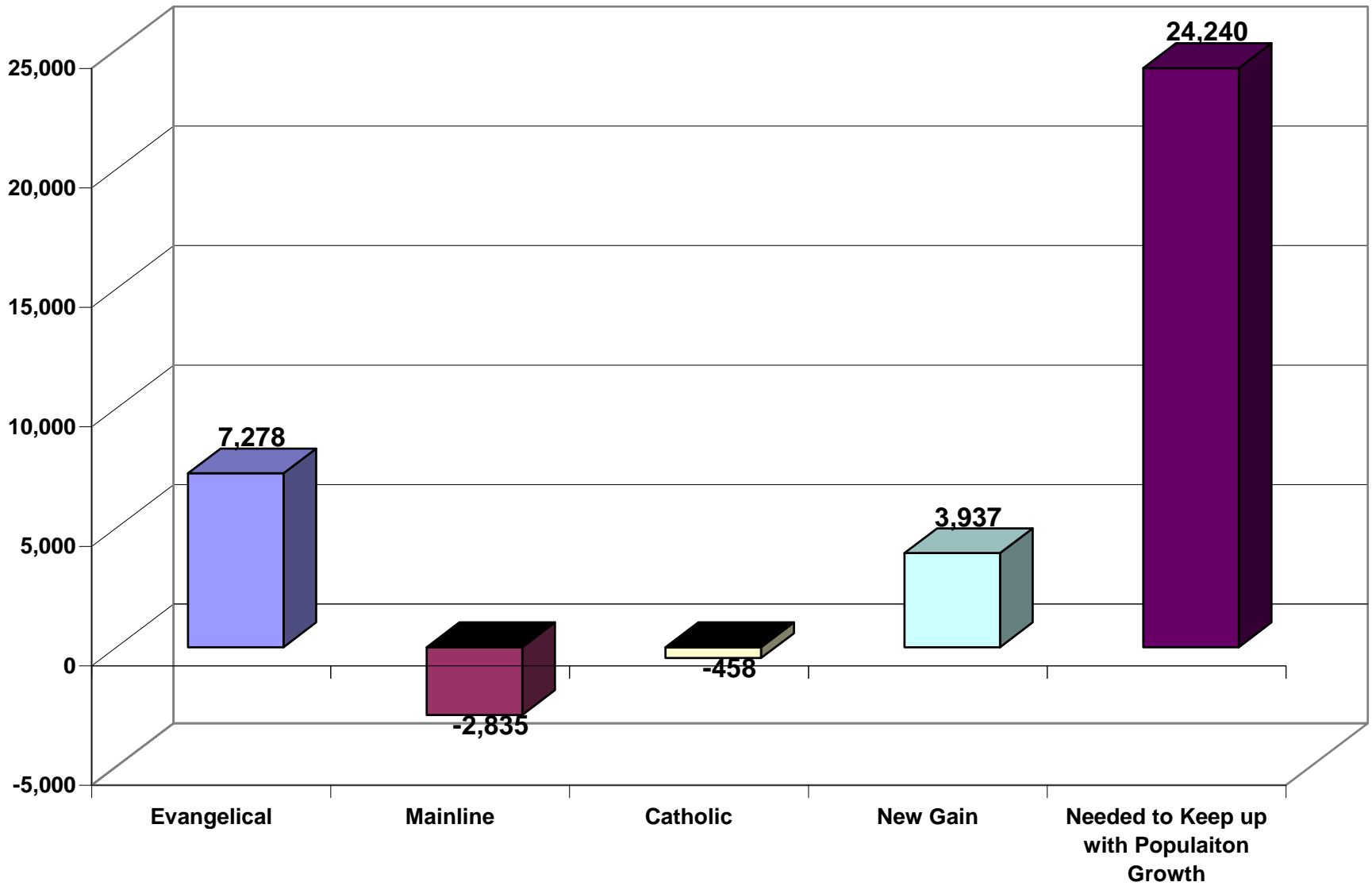
2008 = 6759

High point: 2005 = 7001

2005-2008 decline = -3.5%

**The current increase in the number of churches is only about one quarter of what is needed to keep up with the population growth.**

# Net Gain in Churches 2000-2008



# Conversion Growth Rates

“According to denominational statistics roughly half of all churches in America did not add one new person through conversion growth last year.”

(Lost in America by Clegg and Bird)

# Michigan District

## *Conversions*

11 of 51 churches (21.5%) reported  
no conversions in 2008

9 of 51 churches (17%) reported 1  
conversion in 2008 – 11.0%

# Michigan District

## *Conversion Growth Rates*

2001 – 7.4%

2008 – 11.0%

**A 10% conversion growth rate is considered “healthy.”**

Thoughts on reaching the  
unchurched and/or the lost

*“The 21st century church must  
displace a traditional  
Christendom chaplaincy with a  
church that will become a  
missionary enterprise.”*

Mike Regele, Robust Church Development

Thoughts on reaching the  
unchurched and/or the lost

*“Any church that doesn’t shift  
from ‘ministry as status quo’ to  
‘ministry as mission outpost’ will  
die or become hopelessly  
irrelevant.”*

Tom Clegg, Lost In America

*“While many established churches have a vital ministry to multiple generations, new churches play an equally important role in passing the faith from generation to generation. New churches are critical to the health and vitality of the American Church....”*

David Olson, The American Church in Crisis

